

# 深圳市康华尔电子有限公司

TEL:0755-27838351

QQ:632862232

www.konuaer.com

## 型号命名 PART NUMBERING

### 低通滤波器kHz Ceramic Filter (一)

LT M 455 E U C A00 - B0  
① ② ③ ④ ⑤ ⑥ ⑦ ⑧

① 产品类别 product type

② 结构、尺寸 structure & size

M: 小型DIP型 small DIP

S: 低背型DIP型 low DIP

C: 塑壳封装SMD型 plastic frame SMD

D: 陶瓷封装SMD型 ceramic frame SMD

普通DIP型 common DIP type: 省略 abbreviation

③ 标称中心频率 nominal center frequency

单位为 kHz (三到四位数字表示) 3 to 4 digit numerals, the unit is kHz

④ 类型 type

带宽 band width (kHz)

A:  $\pm 17.5$ ; F:  $\pm 6.0$ ; B:  $\pm 15$ ; G:  $\pm 4.5$ ; C:  $\pm 12.5$ ; H:  $\pm 3.0$ ; D:  $\pm 10.0$ ; I:  $\pm 2.0$ ; E:  $\pm 7.5$

(有后缀T时, 表示此带宽的高阻带型 suffix T means with high attenuation)

⑤ 振子数、振动模式 number of elements/oscillation mode

U: 4振子, 轮廓 4 elements, area expansion mode

W: 6振子, 轮廓 6 elements, area expansion mode

⑥ 中心频率允许偏差 center frequency tolerance

B:  $\pm 1$  kHz; C:  $\pm 2$  kHz; D:  $\pm 1.5$  kHz

⑦ 特殊规格 individual specification

⑧ 包装 packaging

### 低通滤波器 kHz Ceramic Filter (二)

LT B 455 BL2 C H00 - B0  
① ② ③ ④ ⑤ ⑥ ⑦

① 产品类别 product type

② 振子数、振动模式 number of elements/oscillation mode

P: 单振子, 轮廓 signal element, area expansion mode

Z: 单振子, 轮廓, 双器件粘连式 signal element, area expansion mode, two elements direct coupling type

B: 双振子, 长度 two elements, length mode

U: 单振子, 轮廓 (LZ型) signal element, area expansion (LZ type)

LT□A型 LT□A type: 省略 abbreviation

③ 标称中心频率 nominal center frequency

单位为 kHz (三到四位数字表示) 3 to 4 digit numerals, the unit is kHz

④ 类型 type

带宽 band width

⑤ 中心频率允许偏差 center frequency tolerance

3:  $\pm 0.3$  kHz; 5:  $\pm 0.5$  kHz; B:  $\pm 1$  kHz; C:  $\pm 2$  kHz; D:  $\pm 1.5$  kHz

⑥ 特殊规格 individual specification

⑦ 包装 packaging

### 低频鉴频器 kHz Ceramic Discriminator

JT M 455 C Y 28 C A00 - B0  
① ② ③ ④ ⑤ ⑥ ⑦ ⑧ ⑨

① 产品类别 product type

② 结构 structure

M: DIP型 DIP type

C: SMD型 SMD type

③ 标称中心频率 nominal center frequency

单位为 kHz (三到四位数字表示) 3 to 4 digit numerals, the unit is kHz

④ 检波方式 detect mode

C: 正交检波 quadrature detection

⑤ 类型 type

Y: 高容量型 (低容量型省略) high capacitance type (low capacitance type abbreviation)

⑥ 序列号 serial No

与IC型号有关 (三到四位数字表示) related with IC, 3 to 4 digit numerals

⑦ 中心频率允许偏差 center frequency tolerance

2:  $\pm 0.2$  kHz; 3:  $\pm 0.3$  kHz; 5:  $\pm 0.5$  kHz; B:  $\pm 1$  kHz; C:  $\pm 2$  kHz; D:  $\pm 1.5$  kHz; E:  $\pm 0.8$  kHz

⑧ 特殊规格 individual specification

⑨ 包装 packaging

# 深圳市康华尔电子有限公司

TEL:0755-27838351

QQ:632862232

www.konuaer.com

LT455/450□U/W 系列通讯机用陶瓷滤波器

LT455/450□U/W Series of Ceramic Filter For Communication

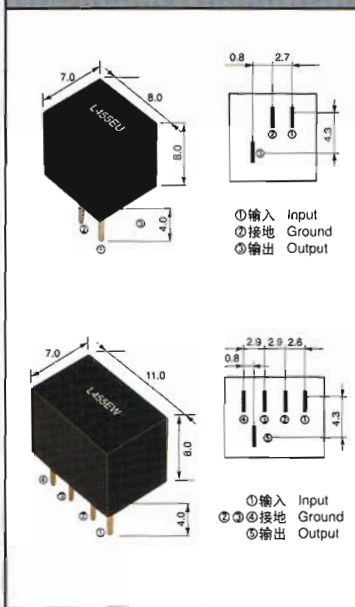
455-450kHz

## 技术特性 TECHNICAL CHARACTERISTICS

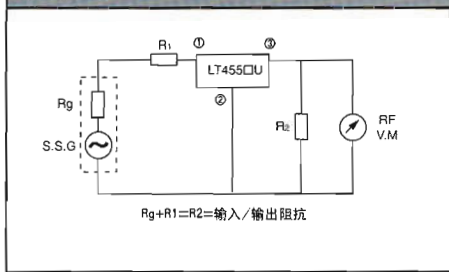
型号 Part Number		中心频率* Center Frequency (kHz)	插入损耗 Insertion Loss (dB) max	通带波动 Pass Band Ripple (dB)max	6分贝带宽 6dB Band Width (kHz) min	40分贝带宽 40dB Band Width (kHz)max(LT455□U)	50分贝带宽 50dB Band Width (kHz)max(LT455□W)	阻带衰减 Spurious Attenuation $f_0 \pm 100\text{kHz}$ (dB)min (LT455□U) (LT455□W)		输入/输出阻抗 Input/Output Impedance( $\Omega$ )
LT455BU	LT455BW	455±2.0	4	2	±15	±30	±30	30	40	1500
LT455CU	LT455CW	455±2.0	4	2	±12.5	±24	±24	30	40	1500
LT455DU	LT455DW	455±1.5	4	2	±10	±20	±20	30	40	1500
LT455EU	LT455EW	455±1.5	6	2	±7.5	±15	±15	30	40	1500
LT455FU	LT455FW	455±1.5	6	2	±6	±12.5	±12.5	30	40	2000
LT455GU	LT455GW	455±1.5	6	2	±4.5	±10	±10	30	40	2000
LT455HU	LT455HW	455±1.0	6	2	±3	±9	±9	30	40	2000
LT455HTU	LT455HTW	455±1.0	6	2	±3	±9	±9	35	60	2000
LT455IU	LT455IW	455±1.0	6	2	±2.0	±7.5	±7.5	30	40	2000
LT455ITU	—	455±1.0	6	2	±2.0	±7.5	—	35	—	2000

\*也适用中心频率450kHz的滤波器  
Center frequency 450kHz is also available

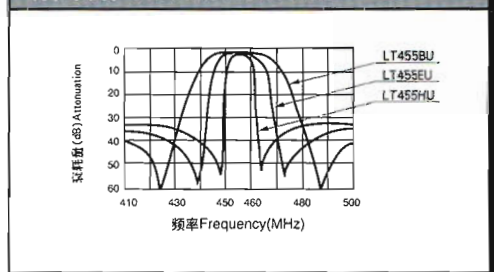
### 外形与尺寸 FIGURE AND DIMENSIONS



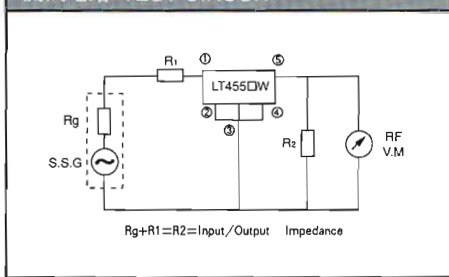
### 测试电路 TEST CIRCUIT



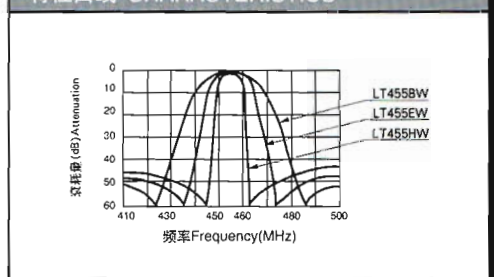
### 特性曲线 CHARACTERISTICS



### 测试电路 TEST CIRCUIT



### 特性曲线 CHARACTERISTICS

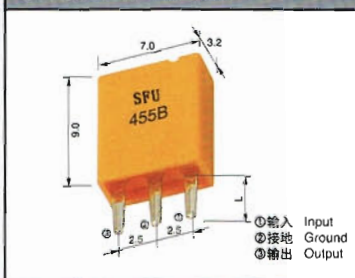


LTP 系列调幅用陶瓷滤波器

LTP Series of Ceramic Filter For AM

450-470kHz

### 外形与尺寸 FIGURE AND DIMENSIONS



## 技术特性 TECHNICAL CHARACTERISTICS

型号 Part Number	3分贝带宽 3dB Band Width (kHz)	中心频率 Center Frequency (f <sub>0</sub> )(kHz)	选择性 Selectivity (dB)min		插入损耗 Insertion Loss (dB)max	结构 Composition	引线长 Lead Length L (mm)	
			-9kHz off	+9kHz off			L1	L2
LTP455A	9.5±3	455±2	5.0	3.0	5.0	单片件级间用 one element	3.6	5.0
LTP455B	9.5±3	462±2	5.0	3.0	5.0	单片件与中周 连用		
LTP450BY	7±2	455±2	6.0	5.0	5.0	one element with IFT		
LTP450BY1	4.5±1.5	452.5±2	9.0	8.0	5.0			

中心频率可以根据需要在450-470kHz范围内选择 Center Frequency(f<sub>0</sub>)is available in a range of 450-470kHz  
标称频率公差 ±2 kHz. The nominal frequency tolerance is ±2 kHz



# 深圳市康华尔电子有限公司

TEL: 0755-27838351

QQ: 632862232

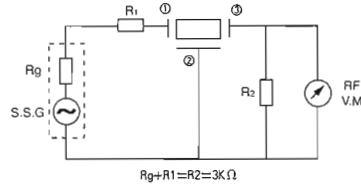
## LTP 系列调幅用陶瓷滤波器 LTP Series of Ceramic Filter For AM

450-470kHz

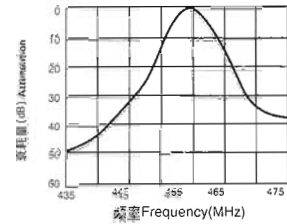
推荐中频变压器 (7mm正方形)  
Recommended IFT (7mm Square)

项目 Item	类型 Type	LTP455B		
绕组规格 Winding Specification		①~②	②~③	③~④
底视图 From bottom				
空载Q值 unloaded Q <sub>u</sub>		70T	115T	7T
调谐电容量 Tuning Capacity		108PF		

### 测试电路 TEST CIRCUIT



### 特性曲线 CHARACTERISTICS



## LTM455/450□U/W 系列通讯机用陶瓷滤波器 LTM455/450□U/W Series of Ceramic Filter For Communication

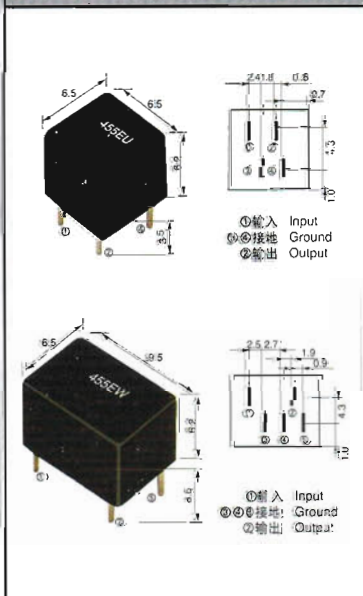
455-450kHz

### 技术特性 TECHNICAL CHARACTERISTICS

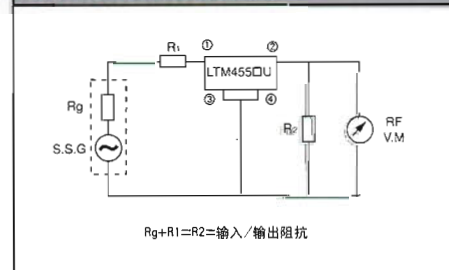
型号 Part Number	中心频率* Center Frequency (kHz)	插入损耗 Insertion Loss (dB) max	通带波动 Pass Band Ripple (dB) max	6分贝带宽 6dB Band Width (kHz) min	40分贝带宽 40dB Band Width (kHz) max (LT455□U)	50分贝带宽 50dB Band Width (kHz) max (LT455□U)	阻带衰减 Spurious Attenuation f <sub>0</sub> ± 100kHz (dB) min (LTM455□U) ; (LTM455□W)		输入/输出阻抗 Input/Output Impedance (Ω)
LTM455BU LTM455BW	455 ± 2.0	4	2	± 15	± 30	± 30	30	40	1500
LTM455CU LTM455CW	455 ± 2.0	4	2	± 12.5	± 24	± 24	30	40	1500
LTM455DU LTM455DW	455 ± 1.5	4	2	± 10	± 20	± 20	30	40	1500
LTM455EU LTM455EW	455 ± 1.5	6	2	± 7.5	± 15	± 15	30	40	1500
LTM455FU LTM455FW	455 ± 1.5	6	2	± 6	± 12.5	± 12.5	30	40	2000
LTM455GU LTM455GW	455 ± 1.5	6	2	± 4.5	± 10	± 10	30	40	2000
LTM455HU LTM455HW	455 ± 1.0	6	2	± 3	± 9	± 9	30	40	2000
LTM455HTU LTM455HTW	455 ± 1.0	6	2	± 3	± 9	± 9	30	60	2000
LTM455IU LTM455IW	455 ± 1.0	6	2	± 2.0	± 7.5	± 7.5	30	40	2000
LTM455ITU	—	6	2	± 2.0	± 7.5	—	35	—	2000

\*也适用中心频率450kHz的滤波器 Center frequency 450kHz is also available

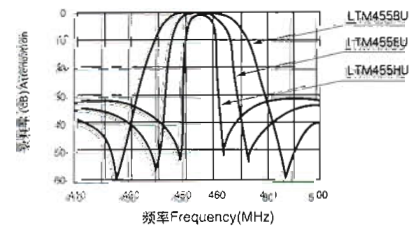
### 外形与尺寸 FIGURE AND DIMENSIONS



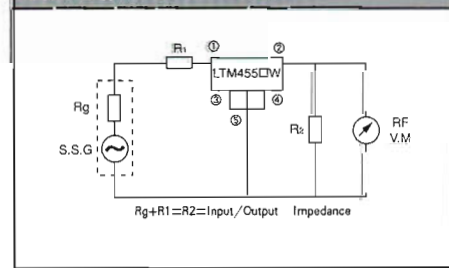
### 测试电路 TEST CIRCUIT



### 特性曲线 CHARACTERISTICS



### 测试电路 TEST CIRCUIT



### 特性曲线 CHARACTERISTICS

